

RESINS

Promores 1

BONDING BRIDGE

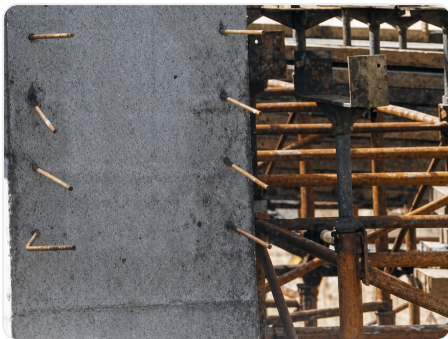
Acrylic resin designed for the bonding of hardened and fresh concrete, preventing them from forming two different bodies.

APPLICATIONS

Repair of concrete pavements and surfaces

Working joints in concreting

Overlays and joints between new and old concrete



FEATURES

- 01 Adhesion promoter for repairs
- 02 Suitable for working joints in concreting
- 03 Linking bridge in floor overlays
- 04 Additive in mortar: greater grip and plasticity

DIRECTIONS FOR USE

Apply with a brush or roller on a firm substrate, free of residues and damp.

Priming: use pure or diluted up to 50% in clean water. Before it dries, extend the concrete or mortar.

For thin layers, mix 250 cc per 50 kg bag of cement to provide greater grip, while continuing to prime the substrate.

TECHNICAL DATA

Appearance	Opaque liquid
Solubility in water	Emulsifiable
Color	White
Density	1.04 ± 0.01
pH	8 ± 1
Active substance	35.2 %

PRODUCT DATA

COMPOSITION

Adhesion promoters and water.

COVERAGE

Priming: dilute up to 50% with clean water.

Additive in mortar: 200–250 cc per 35 kg bag of cement.

SAFETY

Biodegradable. Do not ingest.

S61 Do not dispose of in the environment.**S2** Keep out of reach of children.

NOTES

In case of accidental ingestion, call the Toxicological Information Service: 915 62 04 20.